

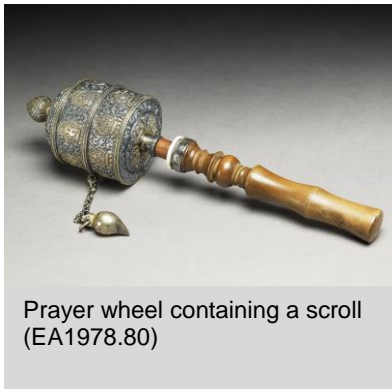
Pilgrimage

This is a selection of objects that can be used to consider the physical and spiritual journey of pilgrimage in several world religions.

You could consider:

- What is the object?
- Who might have used it and why?
- How are symbols used to express belief?

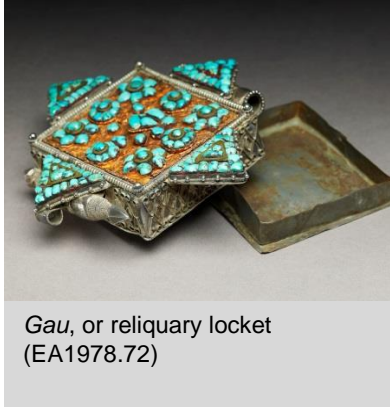
Buddhism



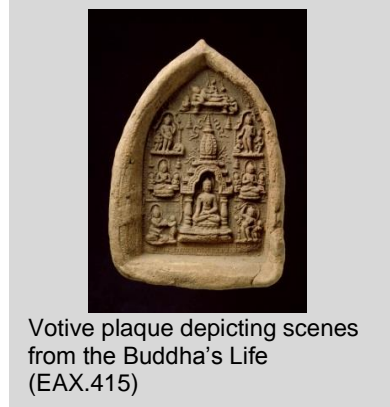
Prayer wheel containing a scroll
(EA1978.80)



Stone model of the Mahabodhi
temple (EA1996.4)

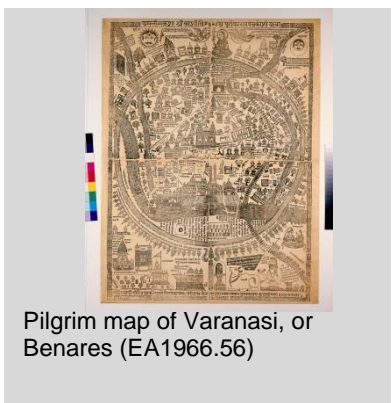


Gau, or reliquary locket
(EA1978.72)



Votive plaque depicting scenes
from the Buddha's Life
(EAX.415)

Hinduism



Pilgrim map of Varanasi, or
Benares (EA1966.56)



The Jagannatha Trio within the
Puri Temple (EA1967.209)

Islam



Pilgrim token with domed building
(EA2002.31)



Pilgrim's flask in an embroidered
linen bag (EA1994.113)



Cone of dust from Mecca
(EAX.3287)



Sitarah made for the Mosque of
the Prophet in Medina (EA2012.3)

Jainism



Shrine to the teachers Jinadatta
Suri and Jinakushala Suri
(EA1997.189)

Shintoism



Pilgrims at Kasuga Taisha Shrine
(EAX.5361)